

**Stamps:**

All About Dad

**Die-namics:**

Cross-Stitch Rectangle  
Dad

**Card Stock:**

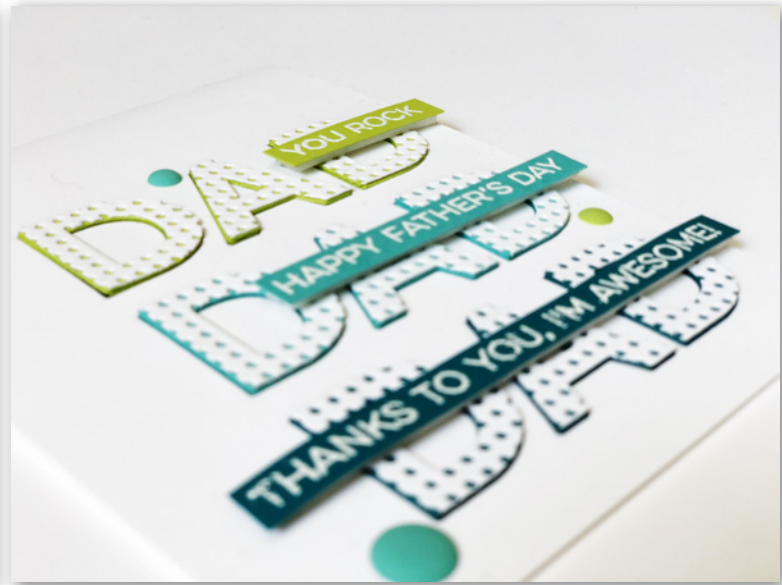
Blu Raspberry  
Limelight  
Smooth White  
Tropical Teal

**Ink:**

VersaMark

**Supplies:**

Tropical Assortment Matte Sprinkles  
White Detail Embossing Powder

**Steps:**

1. Cut white card stock to 4 ¼" x 11". Use a pencil to lightly mark a line approximately ¼" from the right edge and ½", 1 ¾", and 3" up from the bottom edge. Using the pencil marks as a guide, die cut "DAD" three times into the card front, reserving the interior portions of each letter.
2. Die cut "DAD" three times each from three different colors of card stock. Layer and adhere together the layers from each set. Die cut a panel of white card stock with a cross-stitch die. From the cross-stitch panel, die cut "DAD" three times. Layer each of the cross-stitch pieces onto the three colored assemblies.
3. Apply tape to the back side of the card front and inlay each die-cut letter assembly. Insert the letter interiors you've saved.
4. Stamp and heat emboss three sentiments. Trim to size and attach to card front using dimensional adhesive. Apply accents as desired.

**Design tips:**

- Customize an envelope by dry embossing the flap with a coordinating word die to continue the card theme to the enclosure.
- If you wish to disguise the tape and letter backs, adhere a 4 ¼" x 5 ½" panel of white card stock to the card interior.